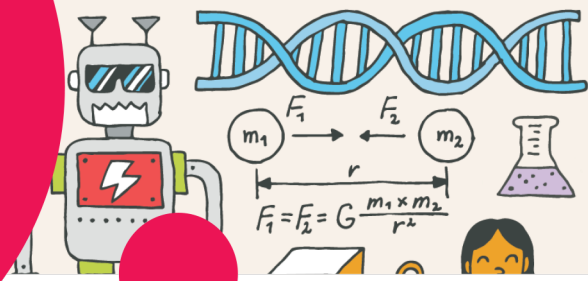


# MUSEUM MISSION



## Recommended for young explorers ages 8-12\*

Your mission — should you choose to accept it — is to explore the museum and gain as much knowledge as possible!

\*Reminder: Children under 12 must be accompanied by an adult at all times.



**Exhibitions**

**A Artifact Alley**

Stroll through interactive displays and over 700 artifacts.

**B Into the Great Outdoors**

See how people use technology to get outdoors and experience Canada.

**C Steam: A World in Motion**

Explore a time when steam made Canada—and the world—go round.

**D Sound by Design**

Hear and see what happens when sound meets design.

**E From Earth to Us**

Explore how we transform natural resources to make the everyday things in our lives.

**F Crazy Kitchen +**

Challenge your perceptions and experience illusions that play with your senses.

**G Medical Sensations**

Explore the world of medicine through the five senses.

**H Hidden Worlds**

Engage with microscopes, telescopes, and digital interactives to explore worlds beyond our reach.

**I ZOOM (ages 0-8)**

A hands-on space where children can imagine, build, test, try...and try again!

**H Wearable Tech**

Discover a range of innovative technologies designed for the body.

**I Technology in Our Lives**

See the gadgets, tools, and appliances that shape our lives.

**E Exploritek**

A tinkering space dedicated to learning by doing.

# ARTIFACT ALLEY

## Where am I?

Start your hunt at the front of the museum, and first up is Artifact Alley! Look around for these items.

## Stand on the ice floe. Who comes to visit?

- a. Polar Bear
- b. Seal
- c. Fish
- d. Penguin

**Find me: I am tall, have two cylinders, and was used to pump gas.  
What colour am I?**

- a. Red
- b. Blue
- c. Yellow
- d. Green

Bonus points if you turn my lights on!



**B**

# STEAM: A WORLD IN MOTION

Name the four locomotives on display:

1. \_\_\_\_\_
2. \_\_\_\_\_
3. \_\_\_\_\_
4. \_\_\_\_\_



What kind of engine do they use? \_\_\_\_\_

Find the Triple Expansion Steam Engine. What was this engine built to power?

\_\_\_\_\_

## SOUND BY DESIGN

### Quiet Cube

After the locomotives, head to the Sound by Design exhibition.

Find the Quiet Cube



**What is the Quiet Cube designed to do?**

- a. Protect your ears
- b. Help you take a nap
- c. Make a lot of noise
- d. Eliminate echoes

Go inside!

**According to the decibel meter, what is the sound level in the exhibition hall?**

\_\_\_\_\_decibels

As you are leaving Sound by Design spin the wheel at the top of the ramp at Explore Canada.

**What is your next great Canadian adventure?**

\_\_\_\_\_

**Can you find where your adventure will take place on the map?**

D

## FROM EARTH TO US

### Energy: How do we Power our Lives?

Which home appliance uses the most energy?

- a. TV
- b. Dryer
- c. Heater



Go to Canada's Energy map.

Which energy sources does Ontario NOT have?

Wind

Coal

Fossil Fuels

Tidal

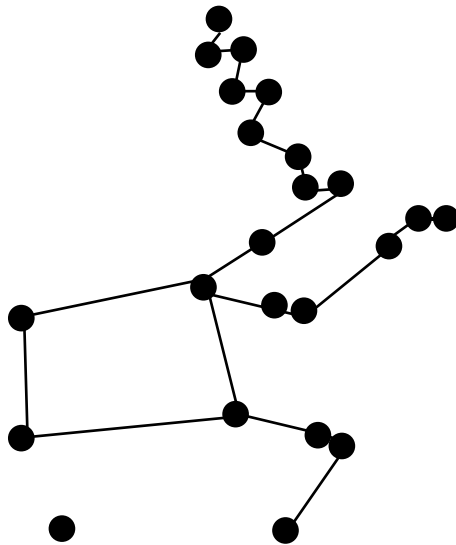
Solar

F

# HIDDEN WORLDS

## Discover the Stars

Find the Indigenous Star Charts along the back wall of Hidden Worlds. Look at the Ojibwe Star Chart.



What animal does this constellation represent?

---

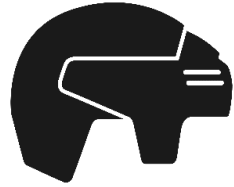
# H

## WEARABLE TECH

### Suit Yourself!

Little force, big impact.

Can you make the light turn orange?



### Assessment Required?

What force of acceleration would require that a person be assessed for a concussion?

- a. 30 gs
- b. 80 gs
- c. 50 gs

### Get Connected!

Find the Hexoskin Biometric Shirt. **Who wore it?**

---

Where did she win a gold medal?

- a. 2012 Olympics in London, England
- b. 2016 Olympics in Rio, Brazil
- c. 2004 Olympics in Athens, Greece

